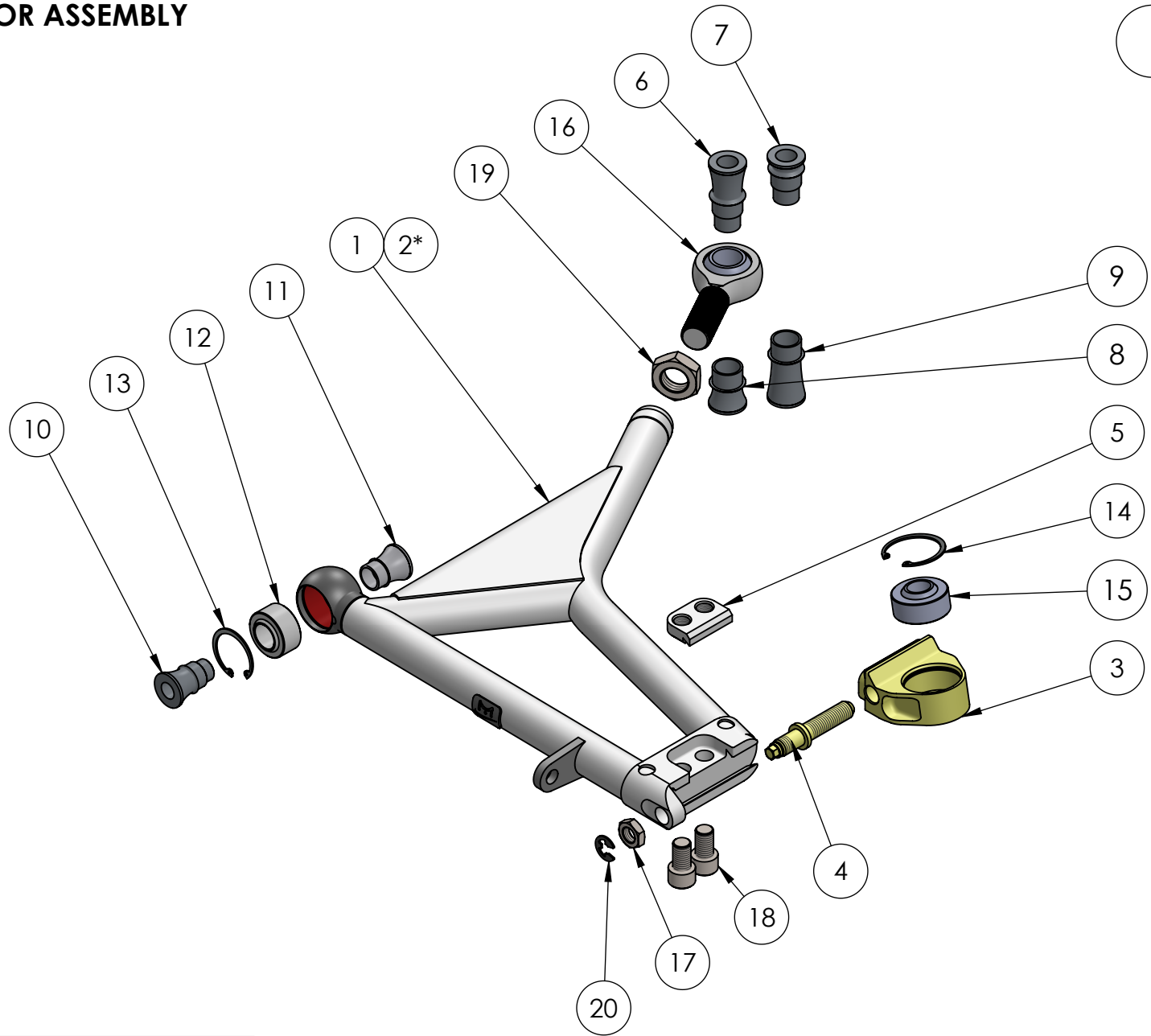


BOM FOR ASSEMBLY

LH SIDE SHOWN
RH SIDE OPPOSITE



THE INFORMATION CONTAINED IN THIS DRAWING IS THE SOLE PROPERTY OF MSI (Moore-Sport INC.). ANY REPRODUCTION IN PART OR AS A WHOLE IS STRICTLY PROHIBITED.

* NOT SHOWN IN DRAWING

GR Traction Control arm



| | | | | | |
|-------------|---------------------|----------------|------------------------|----------|------------|
| CAR MODEL | GR Impreza | CONFIGURATION: | ASSEMBLY: | REV | 2022-09-20 |
| APPLICATION | Street / Motorsport | Default | MSIsub02-19-010 | 1 | 5570.043 |

5

4

3

2

1

A

A

BOM FOR ASSEMBLY

| NO. | PART NUMBER | DESCRIPTION | QTY. |
|-----|----------------------|--|------|
| 1 | MSIsub02-19-010a-LH | LH GR TCA | 1 |
| 2* | MSIsub02-19-010a-RH | RH GR TCA | 1 |
| 3 | MSI-MTRSPRT-02-024a | Adj 10° Bearing Carrier | 2 |
| 4 | MSI-MTRSPRT-02-024c | Dovetail Adjustment Bolt | 2 |
| 5 | MSI-MTRSPRT-02-024f | Dovetail Clamp Block | 2 |
| 6 | MSI-GAXSW2014x27-A | 20OD x 14ID 27mm Spacer | 2 |
| 7 | MSI-GAXSW2014x10-A | 20OD x 14ID 10mm Spacer | 2 |
| 8 | MSI-GAXSW2014x18-B | 20OD x 14ID 18mm Spacer | 2 |
| 9 | MSI-GAXSW2014x35-B | 20OD x 14ID 35mm Spacer | 2 |
| 10 | MSI-MBWT1812x18.5-A | Inside 12mm ID x 18.5mm Tall Spacer | 2 |
| 11 | MSI-MBWT1812x18.5-B | Outside 12mm ID x 18.5mm Tall Spacer | 2 |
| 12 | MSI-bearing-001 | 18mm ID x 33mm OD Std MSI Bearing | 2 |
| 13 | MSI-bearing-001a | 33mm bearing retaining clip | 2 |
| 14 | MSI-bearing-003a | 38mm Bearing Circlip | 2 |
| 15 | MSI-Bearing-005 | 16ID x 38mm OD Bearing | 2 |
| 16 | MSI-bearing-013a | M20 x 1.5 Rod End | 2 |
| 17 | MSI-M12X1.25-CZJN | Clear Zinc Jam Nut M12 x 1.25 | 2 |
| 18 | MSI-M12X1.25X20-BLCS | Black Cap Screw M12 x 1.25 x 20mm | 4 |
| 19 | MSI-M20X1.5-CZJN | Clear Zinc Jam Nut M20 x 1.5 | 2 |
| 20 | MC-98543A117 | Side Mount Circlip | 2 |
| | <i>UL-S-4239</i> | <i>Shipping Box 18" x 18" x 8" (Kraft)</i> | |

** NOT SHOWN IN DRAWING*

THE INFORMATION CONTAINED IN THIS DRAWING IS THE SOLE PROPERTY OF MSI (Moore-Sport INC). ANY REPRODUCTION IN PART OR AS A WHOLE IS STRICTLY PROHIBITED.



GR Traction Control arm

| | | | | | |
|-------------|---------------------|----------------|------------------------|----------|------------|
| CAR MODEL | GR Impreza | CONFIGURATION: | ASSEMBLY: | REV | 2022-09-20 |
| APPLICATION | Street / Motorsport | Default | MSIsub02-19-010 | 1 | 5570.043 |