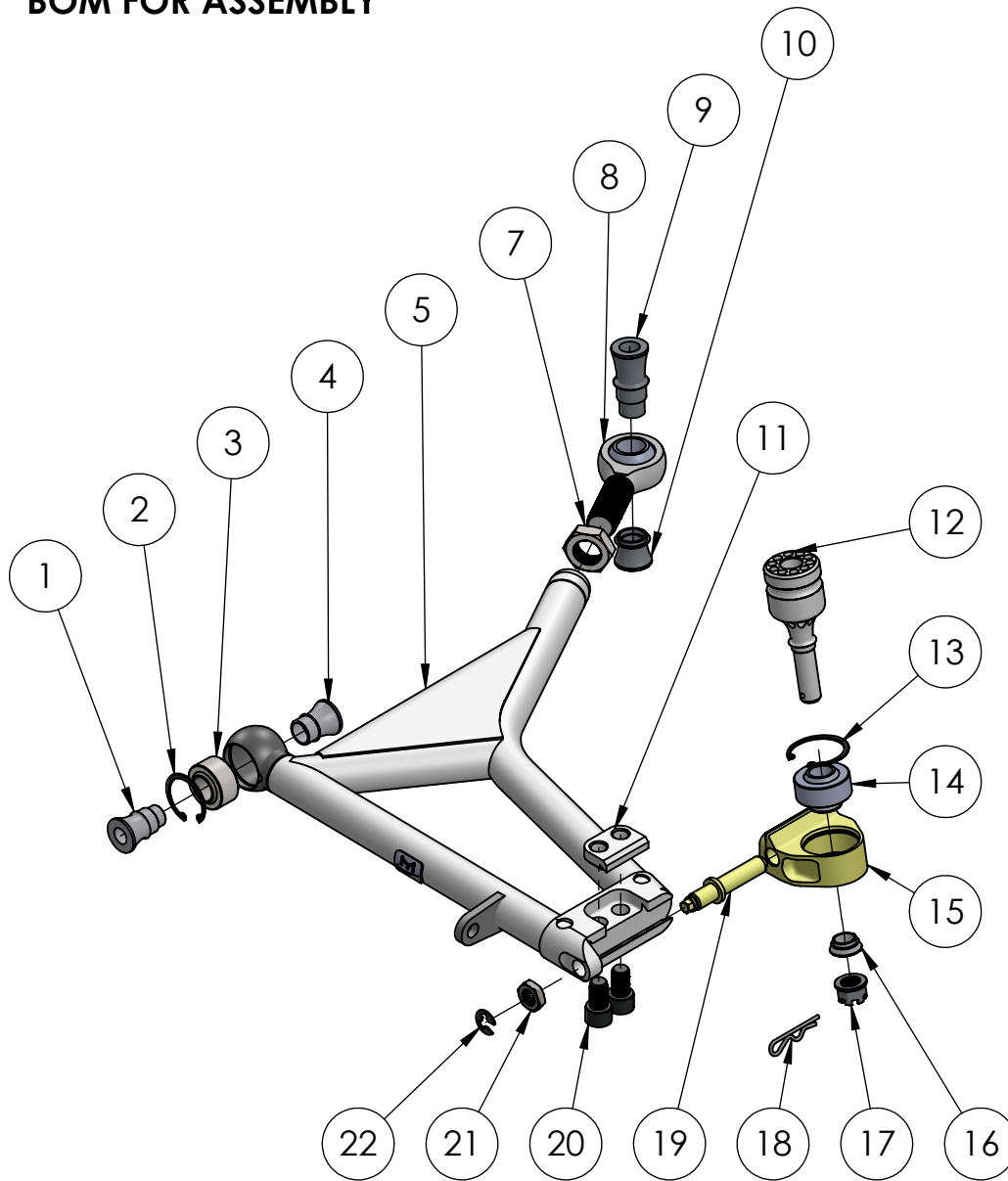


BOM FOR ASSEMBLY



NO.	PART NUMBER	DESCRIPTION	QTY.
1	MSI-MBWT1812x18.5a-SS	18od x 12id x 18.5mm	2
2	MSI-bearing-001a	33mm Circlip	2
3	MSI-bearing-001	33mm Motorsport Bearing	2
4	MSI-MBWT1812x18.5b	18od x 12id x18.5mm	2
5	MSIsub02-19-010a-LH	LH GR TCA	1
6	MSIsub02-19-010a-RH	RH GR TCA (not shown)	1
7	MSI-m20x1.5-CZJN	m20 Clear Zinc jam nut	2
8	MSI-bearing-013a	M20 x 1.5 Rod End	2
9	MSI-GAXSW2014x27-A	20OD x 14ID 27mm Spacer	2
10	MSI-GAXSW2014x18-B	20OD x 14ID 18mm Spacer	2
11	MSI-MTRSPRT-02-024f	Lock Clamp	2
12	MSIsub02-28-001a	OE Upright Pin Adapter	2
13	MSI-bearing-003a	38mm Bearing Circlip	2
14	MSI-Bearing-005	16ID x 38mm OD Bearing	2
15	MSI-MTRSPRT-02-024a	Adj 10° Bearing Carrier	2
16	MSI-GXOW1614x5	16OD x 14ID 5mm Spacer	2
17	MSI-m14x1.5-SSCN	M14 x 1.5 flanged lock nut	2
18	MC-92391A140	3mm Hairpin Cotter Pin	2
19	MSI-MTRSPRT-02-24c	Adjustment Screw	2
20	MSI-m12x1.25x20-BLCS	m12 x 20mm Cap Screw	4
21	MSI-M12x1.25-CZJN	m12 x 1.25 jam nut	2
22	MC-98543A117	Side Mount Circlip	2
*23	MSI-GAXSW2014x10-A	20OD x 14ID 10mm Spacer	2
*24	MSI-GAXSW2014x35-B	20OD x 14ID 35mm Spacer	2

*** Optional Parts**

LH SIDE SHOWN

THE INFORMATION CONTAINED IN THIS DRAWING IS THE SOLE PROPERTY OF MooreSport Inc. ANY REPRODUCTION IN PART OR AS A WHOLE IS STRICTLY PROHIBITED.



GR TCA W/ Pin adapter

CAR MODEL	GR Impreza	ASSEMBLY:
APPLICATION	Street / Motorsport	

MSIsub02-19-011

REV	10/10/2018
1	SHEET 1 OF 2